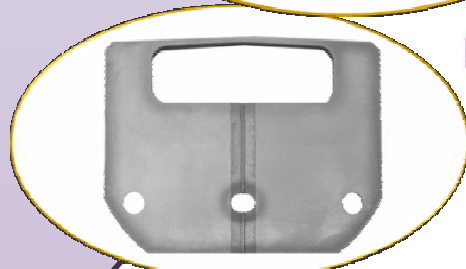
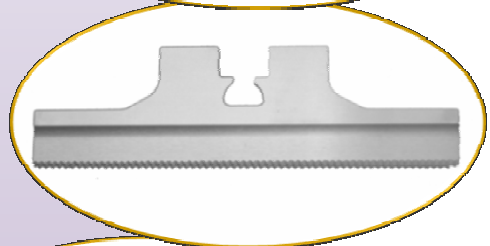
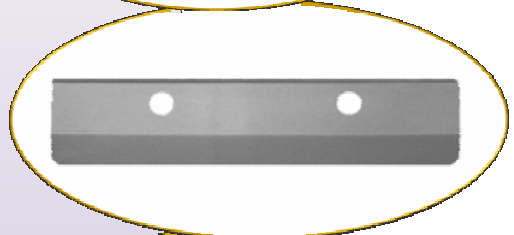
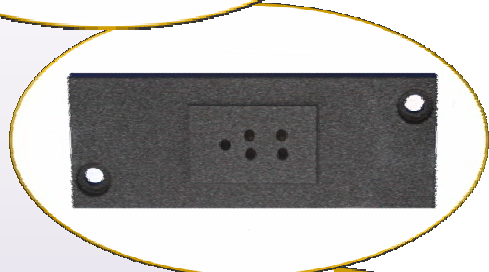
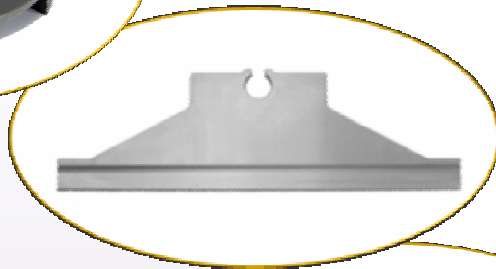
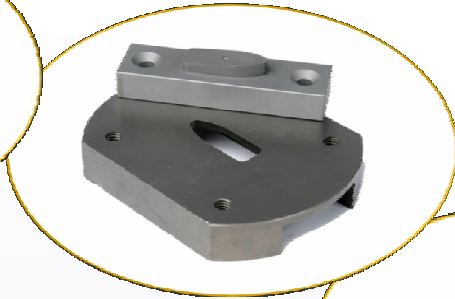
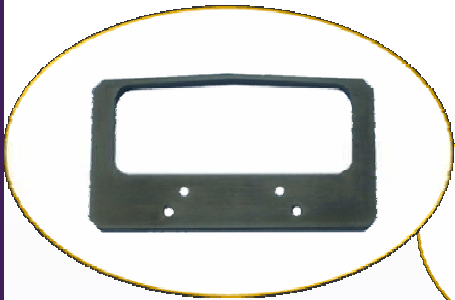




**FRICTEC®**



**For Tetra Pak™**

**TBA Packaging Machines**

**FRICTEC®**  
the  
*Enterprise*  
Initiative  
**WINNER**  
SMART AWARD  
dti



**FRICTEC®**

# FRICTEC®

## *The Competitive Edge.*

Frictec supply over 150 companies worldwide with replacement Tetra Pak™ parts. We are the market leaders in this field with over 10 years experience.

With all parts in stock ready for immediate dispatch using carriers with global coverage and online tracking. Changing to Frictec is easy; we use Tetra Pak™ part numbers, no system changes required.

Competitive prices will ensure significant savings on all of our parts. Reducing cost is fundamental whilst ensuring excellent quality.

Investing in the latest CNC technology, allows Frictec to manufacture parts to exacting standards. Quality assurance procedures are applied throughout production.

With a multilingual sales team in place, there will be an experienced sales manager to deal with any enquiry.

Buy your replacement parts from Frictec.



2 | Tel: + 38 (095) 2736365

Fax: + 38 (044) 4560635

Email: [info@electron.in.ua](mailto:info@electron.in.ua)



# Contents

For Tetra Pak™

TBA Packaging Machines

Single Piece knives- Solid Jaw knives.....	Pages 4-7
Replacement knives- Pull Tab Attachments.....	Pages 8-11
High Performance Knives.....	Pages 12-14
Specialised High Performance Parts.....	Pages 15-19





**FRICTEC®**

## **Single Piece Knives**

### **Solid Jaw Knives - Carton Cutter**

#### **For Tetra Pak™**

- Manufactured to exacting quality standards.
- All parts in stock for same day dispatch with worldwide delivery.
- Very competitive prices. Reduce your annual costs with Frictec.
- Frictec has over 10 years experience manufacturing Tetra Pak™ replacement parts.
- Multilingual sales team available to take your call.



---

4 | Tel: + 38 (095) 2736365      Fax: + 38 (044) 4560635      Email: [info@electron.in.ua](mailto:info@electron.in.ua)

Tetra Pak is a trademark belonging to the Tetra Pak Group



**FRICTEC®**

# Single Piece Knives

## Solid Jaw Knives - Carton Cutter

### For Tetra Pak™



Part number: **1348955**

Machine type: TBA 8/21/A3 Flex

Pack size: 1500ml & 1000ml base and slim



Part number: **1348956**

Machine type: TBA 8/21/A3 Flex

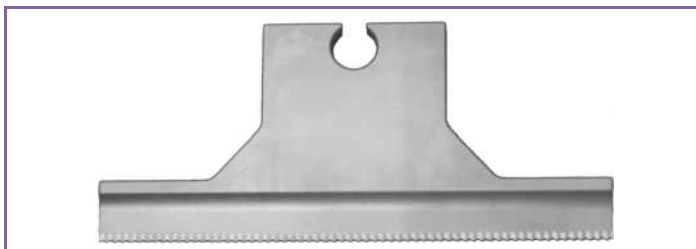
Pack size: 1000ml square



Part number: **1478593**

Machine type: TBA 8/21

Pack size: 2000ml



Part number: **1348966**

Machine type: TBA 21

Pack size: 200m

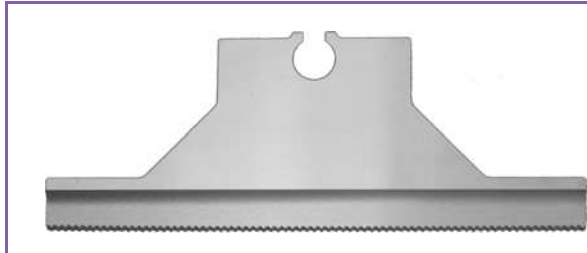
# Single Piece Knives

## Solid Jaw Knives - Carton Cutter



**FRICTEC**<sup>®</sup>

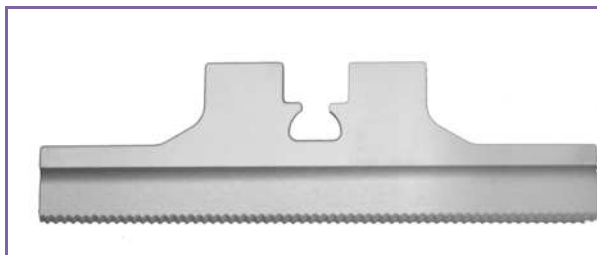
### For Tetra Pak <sup>™</sup>



Part Number: **1484163 / 1549828**

Machine type: TBA 8/21

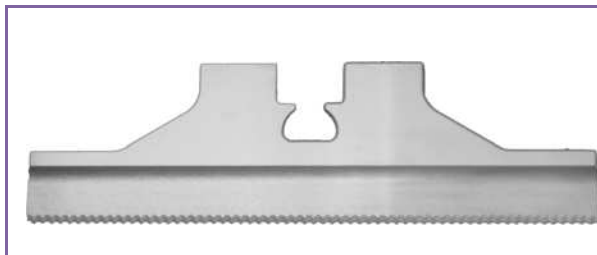
Pack size: 500ml slim



Part number: **1282647**

Machine type: TBA 9/19

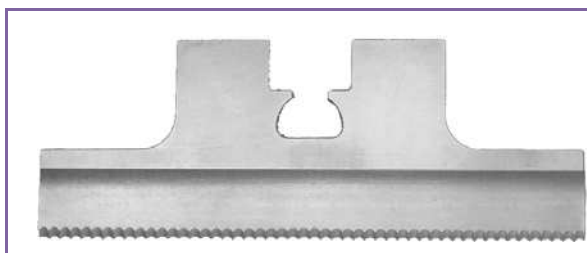
Pack size: 160, 200, 250ml slim & 200ml M



Part number: **1282646**

Machine type: TBA 9/19/Prisma

Pack size: 180, 200, 236, 250, 284ml base  
300,330ml slim & Prisma 330ml square.



Part number: **1282645**

Machine type: TBA 9/19

Pack size: 100ml base & 125ml slim



Part number: **2664761**

Machine type: A3 Flex

# Single Piece Knives

## Solid Jaw Knives - Carton Cutter

For Tetra Pak <sup>TM</sup>



**FRICTEC**<sup>®</sup>



Part number: **1548473/ 2774347**

Machine type: A3 Speed



Part number: **1517289**

Machine type: TBA 22

Pack size: 200ml



Part Number: **271738**

Machine type: TBA 3 / 9 / 19



Part number: **436930**

Machine type: TBA8 Tetra Fino

Buy your replacement knives from **FRICTEC**<sup>®</sup>

7 | Tel: + 38 (095) 2736365

Fax: + 38 (044) 4560635

Email: [info@electron.in.ua](mailto:info@electron.in.ua)



**FRICTEC®**

# Replacement Knives

## Pull Tab Attachments

### For Tetra Pak™

- Proven, consistent high performance replacement parts.
- Specialised coatings support long operating life.
- Frictec's manufacturing process uses the latest CNC technology.
- High quality parts with great savings.
- Buy your replacement parts from Frictec.







**FRICTEC®**

# Replacement Knives

## Pull Tab Attachments

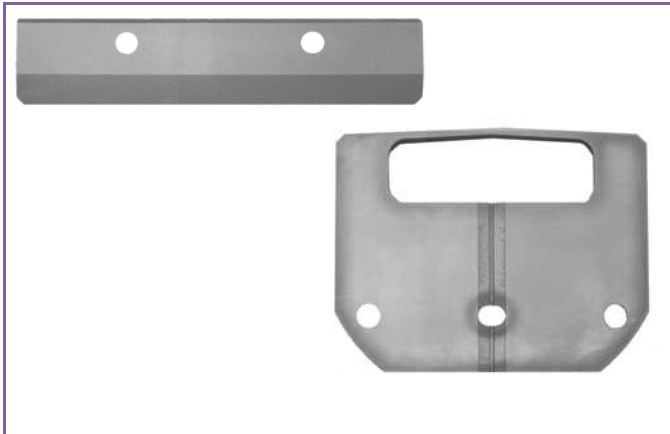
### For Tetra Pak™



Product description: Window and Planar Knives

Part Number Planar knife: **1519379**  
Part Number Window Knives: **1145333**  
**2500097** (Carbide)

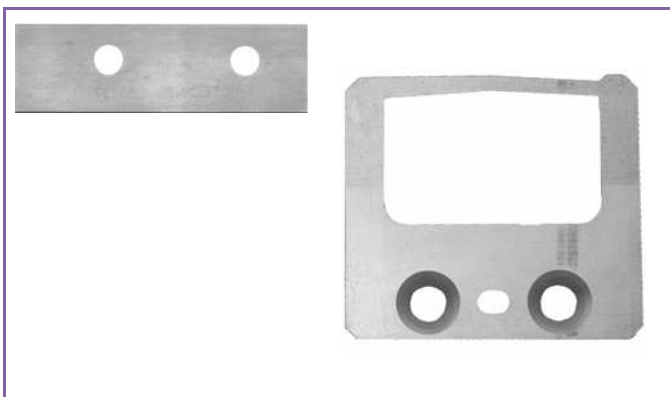
Machine type: Tetra Pak™ PT8/10/21/A3Flex/  
A3 Speed Machines



Product description: Window and Planar Knives

Part Number Planar knife: **1519379**  
Part Number Window Knives: **1282413**  
**1519378** (Carbide)

Machine type: Tetra Pak™ PT19 Machines



Product description: Window and Planar Knives

Part Number Planar knife: **553137**  
Part Number Window Knives: **526936**

Machine type: Tetra Pak™ PT3 Machines

# Replacement Seal Plates

## Pull Tab Attachments

### For Tetra Pak™



**FRICTEC®**



582435/2500038	907332	908220	1255575/2500036	1285092	2500042	2533715
582480	907333	928743	1255576/2500030	1350525	2500043	2563983
582490	907334	929743	1255578	1499448	2504599 AB	2579886
582436/2500037	907997	1143193	1260393-2	2500032	2504606 AB	2603681
583680/2500043	907998	1145341	1282613	2500038	2511642 AB	2604551
906551	908218	1145439	1282619	2500040	2511643	2648819
907331	908219	1255574/2500029	1282752	2500041 AA	2517072	2658078



499633

4996331

10 | Tel: + 38 (095) 2736365

Fax: + 38 (044) 4560635

Email: info@electron.in.ua

# Replacement Seal Plates

## Pull Tab Attachments

### For Tetra Pak™



**FRICTEC®**



583681/2500031	1145491	1347022/2531615	2506246	9993844-208/1583844
906552	1195008	1347024/2331625	2506247	999964-1227
928998	1195109	1348235/2544291	2511651	9999741-1036
1145340	1282608	1380071	2526531 AB	
1145437	1282611	1490292	2504613 Teflon	
1145438	1296798	2506245 AB	2680078	



1498488	1498703/2562321	2579886
---------	-----------------	---------



1143188	2563974 Apticote	191410-0004	191410-0075
1255576/2500030	191410 0001	191410-0074	191410-0077



**FRICTEC®**

## High performance knives

### For Tetra Pak™

- Straw, splice, slice and film knives available from Frictec.
- Easy to order, Frictec uses Tetra Pak™ part numbers.
- Frictec carefully select the latest materials and surface coatings.
- Our strict quality assurance procedures are applied throughout production.
- Frictec's multilingual sales team are available to take your call.



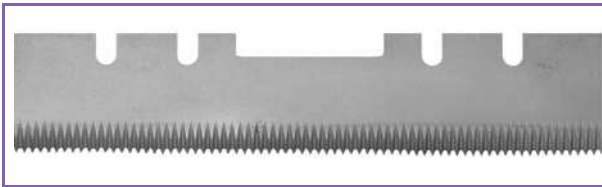
# High Performance Knives

## Tetra Pak Machines

### For Tetra Pak™



**FRICTEC®**



Product Description: Straw Cutter Knife

Part Number: **526893**



Product Description: Straw Cutter knife

Part Number: **537648 / 552905**



Product Description: Straw Cutter knife

Part number: **1326423/1528256**

Tubex Ref. -28-6-930305 -6-3180873308



Product Description: Straw Cutter Knife

Part Number: **959117**



Product Description: Straw Cutter Knife

Part Number: **975967**



Product Description: Straw Cutter Knife

Part Number: **479116**



Product Description: Straw Cutter Knife

Tubex Ref. - 28-6-9305-2

Part Number: **1273592**

# High Performance Knives

## Tetra Pak Machines

### For Tetra Pak™

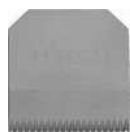


**FRICTEC®**



Product Description: T.S.A Knife

Part Number: **595639/2837847**



Product description: Film Knife

Part number: **1255941**



Product Description: Prism Film Knife

Part number: **580321**



Product Description: Knife

Part Number: **1041162/1538038**



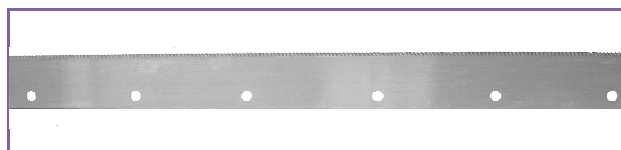
Product Description: Slicing Knife

Part Number: **596678/2552669**



Product Description: Splicing knife

Part Number: **1484695**



Product Description: Splicing knife

Part Number: **1036676**



**FRICTEC®**

## **Specialised High Performance Parts**

**A3 Flex/ Speed TR7/ T Rex TBA 22**

**Punch and Die**

**For Tetra Pak™**

- Easy to order, Frictec uses Tetra Pak™ part numbers.
- Proven, consistent high performance replacement parts.
- Specialised coatings support long operating life.
- Frictec's manufacturing process uses the latest CNC technology.
- High quality parts with great savings.



15 | Tel: + 38 (095) 2736365

Fax: + 38 (044) 4560635

Email: [info@electron.in.ua](mailto:info@electron.in.ua)

Tetra Pak is a trademark belonging to the Tetra Pak Group

# Contact rails & Sealing bars

Tetra Pak Replacement parts

For Tetra Pak <sup>TM</sup>



**FRICTEC**<sup>®</sup>



Product Description: Contact rail A3  
Speed Slim

Part Number: **2531485**



Product Description: Contact rail TBA22

Part Number: **2652083**



Product Description: Contact rail A3  
Speed Base

Part Number: **2535463**



ASU sealing bar (Teflon Coated)

Part Number: **2559986**

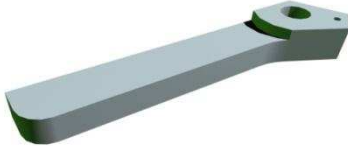


# Slide plates & Carousel Fingers

Tetra Pak Replacement parts

For Tetra Pak™

**FRICTEC®**



Carousel finger (final fold) TBA22

Part Number: **1498101**



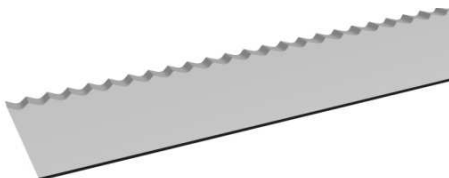
Slide plates A3 Speed

Part Number: **2603546** (large)  
**2603630** (small)



Product Description: Carousel finger (final fold) A3 speed

Part Number: **2641930**



Splicing knife

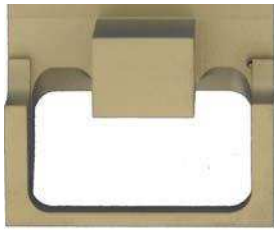
Part Number: **294009**

# TR7/ T Rex Carton Guides/ Leader

For Tetra Pak™



**FRICTEC®**



Carton Guide / Leader (TR7 / T Rex)

Part Number: **472545**

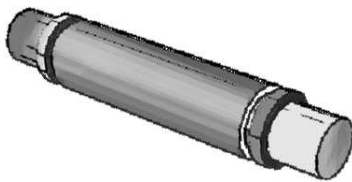
Note: This part will be Ex stock



Brass Sleeve (TR7 / T Rex)

Part Number: **472458**

Note: This part will be Ex stock



Plain Pin (TR7 / T Rex)

Part Number: **472457**

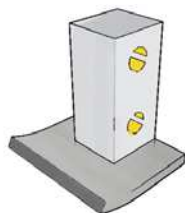
Note: This part will be Ex stock



Spring (TR7 / T Rex)

Part Number: **472456**

Note: This part will be Ex stock



Carton Guide / Leader (T. Rex)

Part Number: **1113360**

Note: This part will be Ex stock

# Punch and Die

PT19 Prisma and PT8/10 Pull Tab

For Tetra Pak™



**FRICTEC®**



Description:	Part Number:
Punch 85	<b>1296411</b>
Die 85	<b>1296410</b>
Prisma Punch 72	<b>1317457</b>
Prisma Die 72	<b>1317458</b>
Prisma Punch 70	<b>1317255</b>
Prisma Punch 70	<b>1255572</b>
Prisma Die 70	<b>1255573</b>
Punch 65	<b>1145496</b>
Die 65	<b>1145497</b>
Punch Prisma 2lts	<b>1484230</b>
Die Prisma 2lts	<b>1484231</b>